



MINI

T - TH - T1 - TB
1 WAY - 1 WAY LCD

Data logger for recording temperature and humidity during transport and in cold rooms.
Integrated USB for data download



USB



Measuring range
from -200 ° C... + 200 ° C



Compliant
EN 12830



PDF report
automatic



Pharmaceutical



Food
Agriculture



Hospital
Research



mini T - mini T1 - mini TB

Temperature

The loggers **XS mini** they are programmable with the zLogg Manager software, and automatically generate a report in PDF format. They are equipped with multi-function displays: (date / time, sampling interval, recording start and stop mode, minimum, maximum, average and average kinetic temperature). All with a simple click of the button. The logger works like a normal USB stick and automatically generates report files. No software is required for data download. It has 4 software programmable alarm thresholds. When connected to a USB port on the PC, the loggers **XS mini** automatically generate a PDF report in graphic format.



mini TB (supplied with external probe)
Cod: 70100303



mini T (internal sensor)
Cod: 70100003



mini T1 (external sensor)
Cod: 70100103

- zLogg Manager programming software (free at www.xsinstruments.com)
- Does not require interfaces or proprietary software to read data
- Report of registrations in CSV tabular format
- Centesimal resolution 0.01 °C
- Available with internal or external sensor
- Multifunction display
- Start with START button
- STOP key function for manual stop which can be activated via software
- Customizable PDF report with graph, tabular report, alarm limits and thresholds exceeded indication
- Event marking
- Statistics of current value, min, max, average and MKT (average kinetic temperature)
- ACCREDIA certifiable

Technical specifications	mini T	mini T1	mini TB
Measuring range Temperature	- 40 °C ... +80 °C	- 40 °C ... +80 °C	- 200 °C ... +200 °C
Measurement range LCD operation	- 10 °C ... +80 °C	- 40 °C ... +80 °C	- 40 °C ... +80 °C
Accuracy	± 0.5 °C (-40 ÷ -10) °C ± 0.3 °C (-10 ÷ +80) °C	± 0.5 °C (-40 ÷ -10) °C ± 0.3 °C (-10 ÷ +80) °C	± 0.3 °C (-10 ÷ +130) °C ± 0.5 °C (over)
Resolution	0.01 °C		
Memory	48000 readings		
Sampling rate	from 5 sec. to 24 hours		
LCD display	Multifunction reflective LCD display, 30x17 mm		
Event marking	yes with Start button (2 sec)		
Temperature sensors	Internal	external dxL = 4x80mm, cable L = 1m	External PT100 with Binder dxL = 3x25mm connection, 3m teflon cable
Response time	T90 at 7 min. up in the air		
Safety	Password protection (via software)		
Diet	3V lithium button battery		
IP protection	IP65	IP64	IP64
External construction material	Polycarbonate		
Average battery life	1 - 2 years (depending on use)		
Buttons	Start and Stop		
Start options	Manual start with or without delay - AutoStart with time and date - AutoStart at a given temperature with or without delay		
Stop options	AutoStop after a set time - AutoStop with date and time - Manual stop		
Warranty	2 years (excluding battery)		
Dimensions / Weight	103 x 35 x 11 mm 31 g with battery (43 g with shell)	103 x 35 x 11 mm 55 g with battery (67 g with shell)	103 x 35 x 11 mm 37 g with battery (49 g with shell)
Certificates	CE, RoHS		
Code	70100003	70100103	70100303

mini TH

Temperature - Humidity

The logger **XS miniTH** is a multi-use datalogger for temperature and humidity measurements. Ideal for warehouses, logistics and pharmaceutical and food storage.



mini TH
Cod: 70100203

Technical specifications

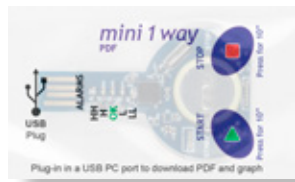
Measuring range Temperature	- 40 ° C... +80 ° C 0... + 100% RH
Measurement range LCD operation	- 10 ° C ... +80 ° C
Accuracy	± 0.5 ° C (-40 ÷ -10) ° C / ± 0.3 ° C (-10 ÷ +80) ° C / ± 3% RH
Resolution	0.01 ° C / 0.01% RH
Memory	48000 readings
Sampling rate	from 5 sec. to 24 hours
LCD display	Multifunction
Event marking	Yes with Start button (2 sec)
Response time	Internal sensor: T90 at 7 min. up in the air
Safety	Password protection (via software)
Diet	3V lithium button battery
IP protection	IP30
External construction material	Polycarbonate
Average battery life	1 - 2 years (depending on use)
Start options	Manual start with or without delay AutoStart with time and date AutoStart at a given temperature with or without delay
Stop options	AutoStop after a set time AutoStop with date and time Manual stop
Warranty	2 years (excluding battery)
Dimensions / Weight	103 x 35 x 11mm / 31g (43g with shell)
Certificates	CE, RoHS
Code	70100203

mini 1 way / mini 1 way LCD

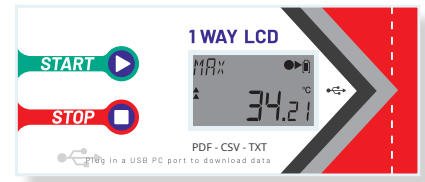
Temperature

Compact single-trip data logger, with programmable alarm thresholds on request. Direct connection to PC. Automatic creation of a PDF file.

The sealed container guarantees the watertight integrity of the data logger, and is FDA (Food and Drug Administration) approved. Simple to use, with only two keys it is possible to manage all the functions of the logger. Flat and thin, with USB connector for PC connection.



mini 1 way
Cod: 70101003



mini 1 way LCD
Cod: 70101043

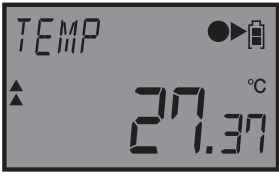
Technical specifications

mini 1 way

mini 1 way LCD

Measuring range Temperature	- 40 ° C ... +80 ° C	
Accuracy	± 0.5 ° C (-40 ÷ -10) ° C ± 0.3 ° C (-10 ÷ +80) ° C	
Resolution	0.01 ° C	
Memory	13000 readings	20,000 readings
Sampling rate	from 5 sec. to 24 hours	
Alarms	4, total and / or consecutive	
Response time	T90 at 7 min. up in the air	
Display	5 Red, Green, Blue LEDs	Multifunction reflective LCD display, 30x17 mm
Buttons	Start and Stop	
Safety	Password protection (on request)	
Diet	Non-replaceable 3V lithium battery	
Battery life	1 years	
IP protection	IP67	
PC connection	USB for data download	
Start options	Manual start with or without delay AutoStart with time and date AutoStart at a given temperature with or without delay	
Stop options	AutoStop after a set time AutoStop with date and time Manual stop	
Certificates	CE, RoHS	
Dimensions / Weight	90 x 51 x 4.5mm (10g)	106 x 47x 7 mm (17g)
Warranty	1 trip	
Code	70101003	70101043

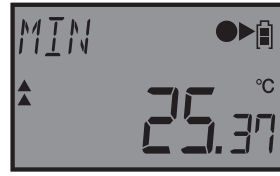
LCD display



Standard screen



Maximum temperature



Minimum temperature



Low alarm duration

The LCD display shows the last stored value and the alarm indication if the logger has exceeded the set specifications.

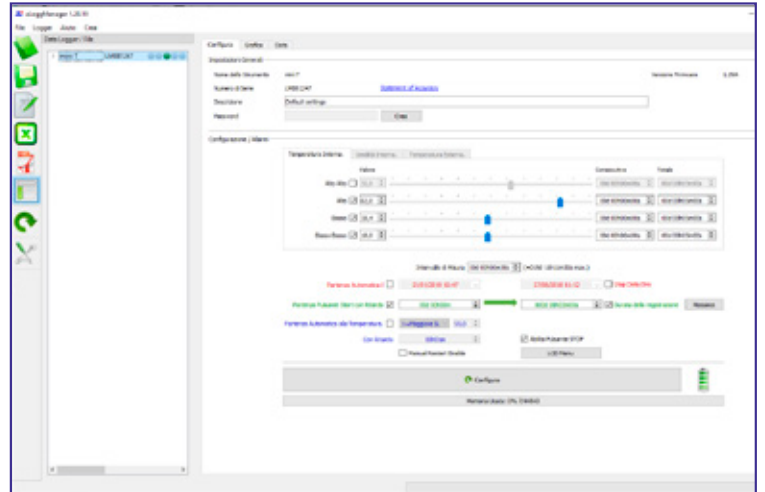
With the logger running, pressing the START and STOP buttons for 1 sec. it is possible to scroll through the menu, displaying the values: "maximum", "minimum", "average", "MKT" and the times elapsed by the logger outside the alarm specifications set.

By continuing to scroll through the menu, it is possible to view the number of measurements recorded in the current trip, the date, the time, the battery voltage, the serial number of the data Logger, the set acquisition time and the start and stop modes of the registration.

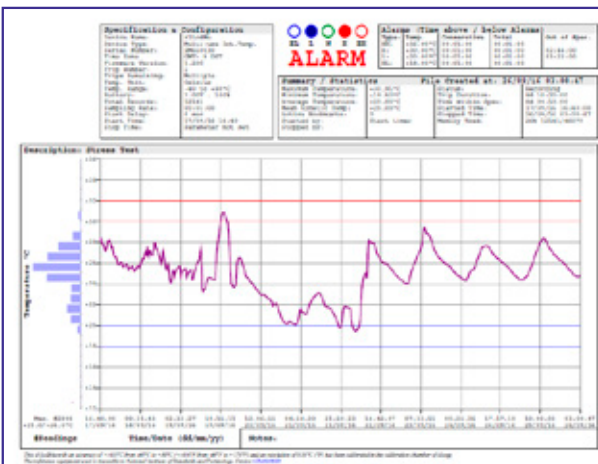
While recording is in progress, pressing for at least 2 sec. The START button of the Data Logger, the message "MARK" appears on the display.

Up to 8 measures can be marked. The checked values are highlighted with a small square on the graph.

Pressing for at least 12 sec. the STOP key allows you to stop the current recording (function that can be activated by the user via the software).



Data logger configuration



PDF report

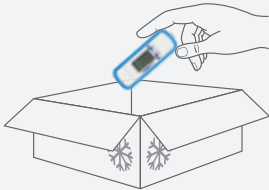
The PDF report includes a summary of the configuration and specifications, the measurement statistics (maximum, minimum, average, kinetic average), the distribution histogram of the recorded temperatures, the transport conditions and the duration of any alarms.

Displays date, time, recorded temperature and number of readings. It is also possible to export data in CSV (Excel) and TXT format.

Simple...



Data logger activation



Insert ne the packaging



data download



data display in PDF

GUARANTEED BY:

COMPANY WITH
QUALITY MANAGEMENT SYSTEM
UNI EN ISO 9001: 2015
CERTIFIED BY CERTIQUALITY



DISTRIBUTED BY:

